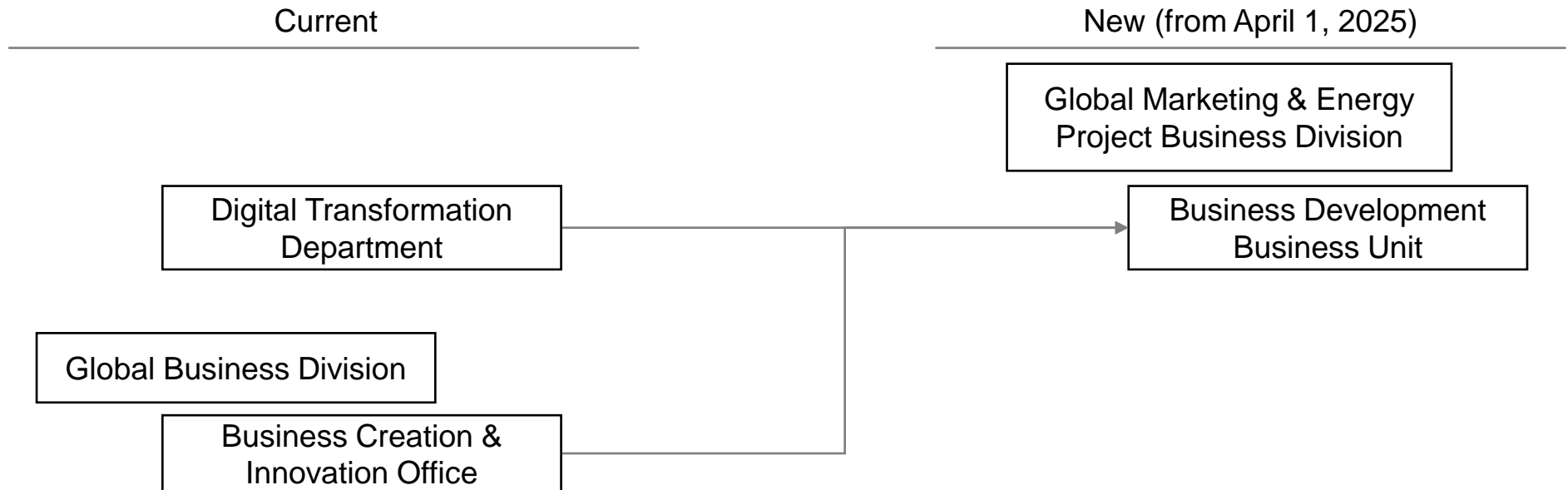
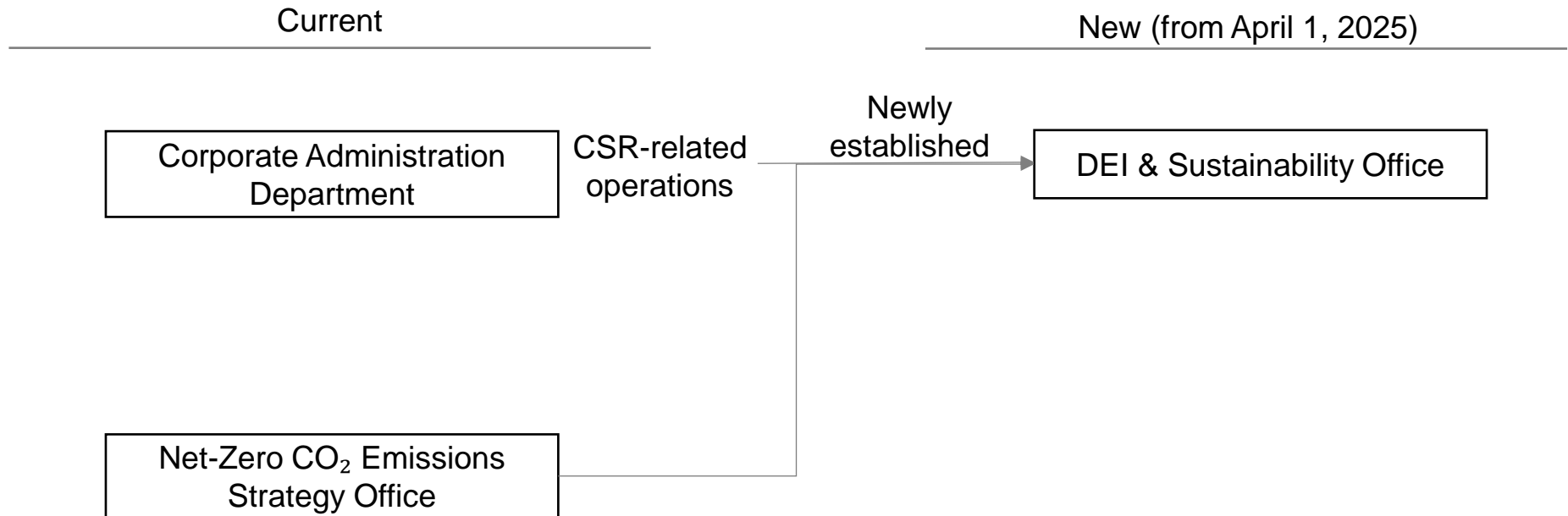


- The Business Development Business Unit will be established within the Global Marketing & Energy Project Business Division.
- The current Digital Transformation Department and Business Creation & Innovation Office will be incorporated into the Business Development Business Unit.



- A new DEI & Sustainability Office will be set up.
- The operations of the current Net-Zero CO₂ Emissions Strategy Office and the CSR-related operations of the Corporate Administration Department will be incorporated into this new office.



- After reassessing the division of responsibilities of the Corporate Administration Department and the Global Strategy, Safety & Health Department, we are combining them and renaming them the Corporate Administration, Safety & Health Department and Global Strategy Department.

Current

Corporate Administration
Department

Global Strategy, Safety &
Health Department

New (from April 1, 2025)

Corporate Administration,
Safety & Health Department

Global Strategy Department

For more information, please contact the:
Corporate Communications & CSR Unit,
Corporate Administration Department
Metal One Corporation
Email: value.one@mtlo.co.jp