

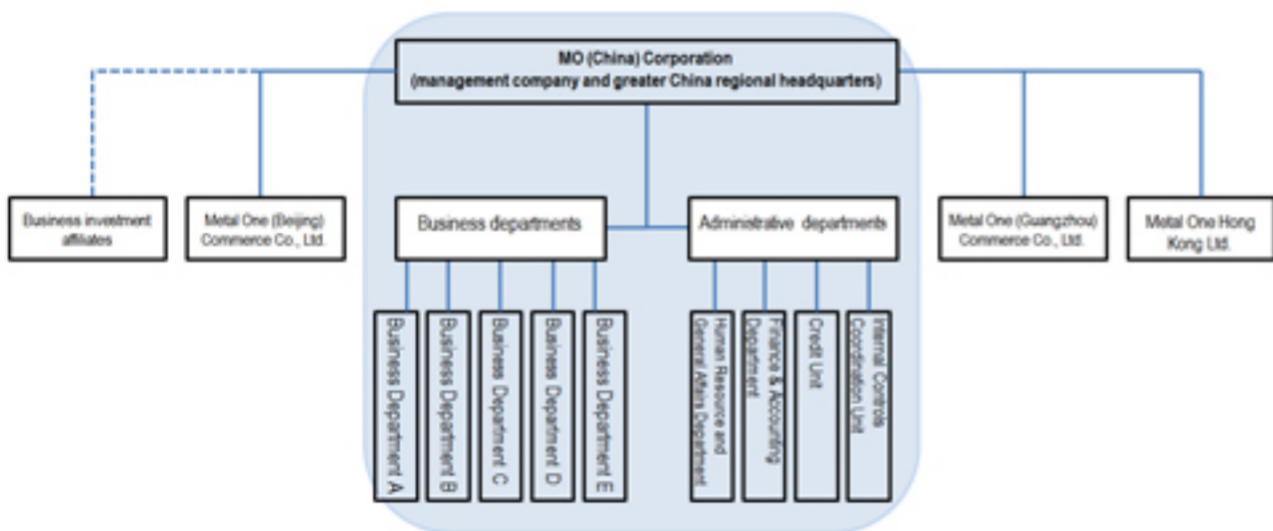
Shanghai City Authorizes Metal One (China) Corporation Management Company As Metal One’s Greater China Regional Headquarters

On November 14, 2016, Shanghai City authorized Metal One (China) Corporation (headquartered in Shanghai; Chairman Yuichi Tai, President Taro Akasaka)—the Chinese subsidiary of Metal One Corporation (headquartered in Chiyoda-ku, Tokyo; President Iwao Toide)—to serve as our greater China regional headquarters.

This authorization means we are entitled to preferential treatment, including speedier, more efficient customs clearance in import-export operations and speedier immigration and visa acquisition procedures for personnel affiliated with the regional headquarters. The company now also serves as the Metal One Group’s corporate administration arm in China, providing more robust administrative services in terms of sales management, finance, personnel, general affairs and credit checks to our Chinese bases* and group companies in China, improving the management levels of various group affiliates and strengthening governance.

* There are three subsidiaries—Metal One (Beijing) Commerce Co., Ltd., Metal One (Guangzhou) Commerce Co., Ltd. and Metal One Hong Kong Ltd.

■ Metal One (China) Organization Chart



For more information regarding this news release:

Yoshiyuki Watanabe, Hisato Seki
Corporate Planning Department
Metal One Corporation

Tel: +81-3-6777-2080