

# Corporate Profile



***Metal One***  
*Metal One Corporation*



Head Office

***Providing the world with greater possibilities.***

We expand the possibilities of manufacturing worldwide through our businesses that deal in steel.  
We create unprecedented, novel solutions that address all kinds of social issues.  
We believe in the power of steel—a material indispensable to our world.

## Creating New Value to Pave the Way to the Future

As a leading steel distribution company, Metal One has sought to enhance the corporate value of our customers and business partners worldwide since our establishment in 2003 by developing innovative capabilities and services in tune with the times.

The term “VUCA” (volatility, uncertainty, complexity and ambiguity) has long been common sense and the world is undergoing changes with unprecedented speed. Issues such as those related to carbon neutrality, an aging society with fewer children, advances in digital technologies, and geopolitical risks are also becoming more varied and complicated.

With all that in mind, we have outlined the themes of change and growth and have been working on a variety of initiatives. Whether the issue is digital transformation, carbon neutrality, or developing new operations, we are making maximum use of the knowledge and expertise our company has cultivated over our many years of distributing steel products, as well as our group’s network, continuing to take on the challenges of thorny issues.

Those challenges are linked to the enhancement of value for all our stakeholders. When it comes to our company, we are also confident that this will lead to establishment of a sustainable corporate foundation, building a robust structure that will remain unaffected by environmental changes of any kind.

Reflecting the core principles of our company’s philosophy—“global citizen,” “honesty and virtue,” and “aspiration and creativity”—all our activities contribute to achieving a more sustainable society. At the same time, we are continuing to strive to become a corporate group that creates new value that paves the way to the future.

# TOP MESSAGE

Yoshiyuki Watanabe  
President & CEO, Director

*Yoshiyuki Watanabe*

## The Metal One Way

### Corporate Philosophy

#### Global Citizen

We will broadly contribute to society in an effort to live and work with the people of the world.

#### Honesty and Virtue

Honesty and fairness in every respect will be our continuing source of pride.

#### Aspirations and Creativity

We will lead the way to a bright and prosperous future in our pursuit of the ideal market and distribution.

### Purpose

**Empower the Global Metal Supply Chain**

### Vision

#### Metal Market Maker

Creating a market that will help the growth of the metal industry

Metal One’s goal is to become a “Metal Market Maker” that can help bring about the sustained revitalization and growth of the metal industry through greater sophistication and globalization. We are aiming to stimulate the creation of a new market through the collaboration of every sector and every enterprise in contact with the metal industry, so that metals, which are materials of vital importance, can continue to enhance human life and culture.

### Mission

#### Metal Value Optimizer

Streamlining and renovating the market through value optimization

Working together with all the participants of the metal industry community in the world, Metal One will live up to its role as a “Metal Value Optimizer” by engaging in activities that are wholly guided by the objective of raising the level of the industry and the market. Through its experience as a key trading house, Metal One will remain committed to the renovation of the value chain of the steel industry and other metal industries.

# Business Topics

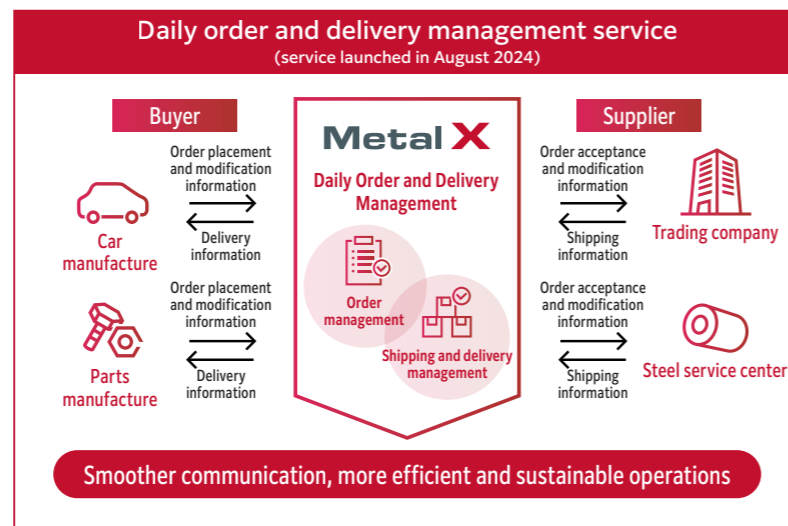
## Metal One and IBM Japan build Metal X® digital platform for automotive steel distribution services

Employing expertise developed through our wide-ranging involvement in automotive industry supply chains, Metal One jointly developed Metal X®—a digital platform that promotes digital transformation and drives sustainable supply chains—with IBM Japan, Ltd., offering it to customers from April 2023. By treating the companies involved in automotive industry distribution channels as a single entity and sharing data through the same system, Metal X enables efficient and sustainable operation. It includes features such as automatic calculation of the required steel material based on parts list information, ranging from automotive components to steel materials, as well as the production schedules of automotive manufacturers. We plan to steadily expand our services.

# Metal X



Metal X Daily Order and Delivery Management service introduction video



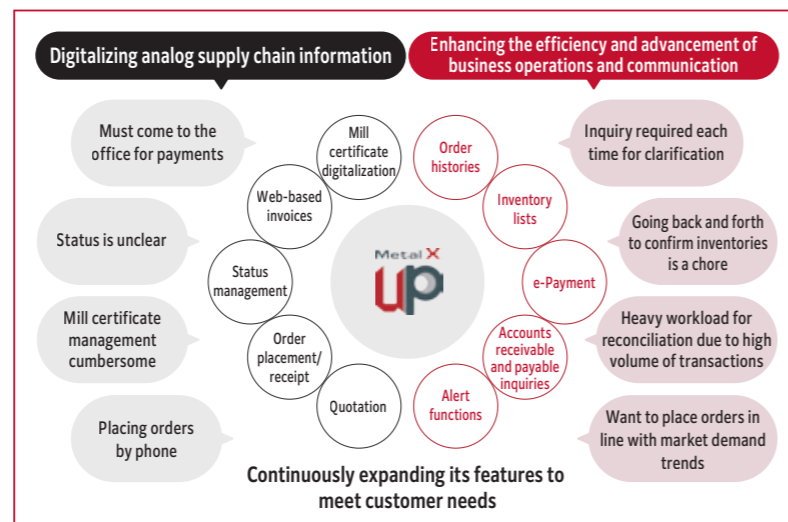
## Metal X UP®: A digital platform designed to create an efficient and valuable steel supply chain

Metal X UP® is Metal One's digital platform that enhances efficiency and sophistication, as well as cutting communications costs, throughout the entire steel distribution network. At the beginning of 2023, we began providing Metal X UP for operations within the steel plate sector, and later for all product categories and sectors in the steel industry. We used agile development methodology to develop Metal X UP, calling on the cooperation of multiple business partners and placing a priority on their operations and convenience. Metal X UP has two main capabilities:

- 1) Digitalizing analog supply chain information, starting with porting analog mill certificate to electronic forms
- 2) Enhancing the efficiency and advancement of business operations and communication, through such things as automated reconciliation of accounts receivable and payable and status management

We will continue to expand and improve the Metal X UP platform's capabilities to ensure that it resolves user issues, and strive to provide services that apply to all product types so that we can support as many business partners as possible.

# Metal X UP



## Seeking to become the first in the world to commercialize mass-produced wave-power generation systems

Metal One has invested in Global Energy Harvest Co. (GEH), which is developing wave-power generation as a new renewable energy option. The new business partnership will leverage the wide range of resources Metal One possesses to enhance the value of reciprocating rotary acceleration and circulatory wave-pumping power generation systems that GEH has developed, leading up to real-world implementation and the development of mass production systems. In reciprocating rotary acceleration power generation, a small generator installed on a wharf or similar site generates power by means of a float on the sea surface as the float's movement in the waves is converted to the direction in which the generator rotates. Meanwhile, circulatory wave-pumping power generation uses wave energy to pump water up, and then drop it into a lower pool via another pipe to generate hydropower. Metal One is seeking to create new value throughout supply chains in the steel industry as a whole, leading up to a low or carbon-free world.

株式会社  
グローバルエナジーハーベスト  
Global Energy Harvest Co.



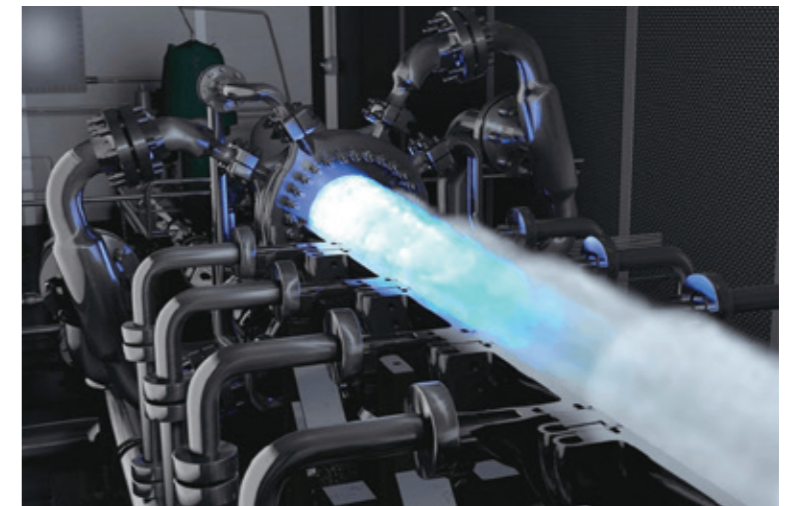
View detailed information about GEH's business here



## Decarbonization sector business partnership with Clean Energy Systems, Inc. of the U.S.

Metal One formed a business partnership in 2023 with American decarbonization engineering firm Clean Energy Systems, Inc. (CES), which possesses proprietary technology that converts exhaust gases that steel and other plants emit into energy. Through our global network, Metal One is introducing CES's technology to the steel industry and helping to create a carbon neutral society by promoting wider adoption of "green" steel manufactured after this technology is adopted. Most of the CO<sub>2</sub> and other exhaust gases that steelworks generate are released into the atmosphere, so eliminating them is an urgent issue. CES has succeeded in developing technology that generates energy (both electric power and heat) by burning a mixture of exhaust gases and oxygen using oxygen combustion devices the company developed independently. In addition, Metal One will be eyeing the possibilities of selling green steel that entails virtually zero CO<sub>2</sub> emissions by using this technology, and is exploring partnerships in a broad range of sectors.

The oxygen combustion technology CES developed



# GROUP VALUE



## Metal One Group's overall capabilities

Metal One and our Group affiliates' combined capabilities in optimizing steel distribution.

Our strong ties with Mitsubishi Corporation and Sojitz Corporation and our robust network, operating in over one hundred locations worldwide.

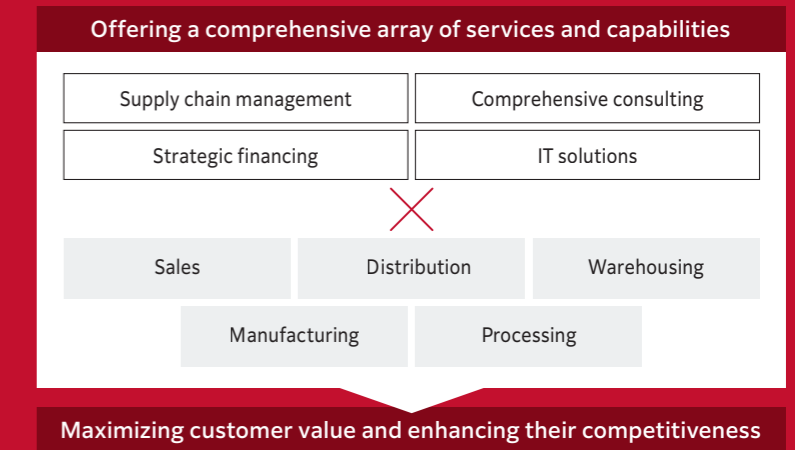
Our capability to create new businesses in close collaboration with partners through digital transformation and carbon neutrality, leveraging our drive to constantly pursue innovation.

Metal One is expanding the possibilities of making things worldwide with these kinds of Group strengths and capabilities, continuing to create new value.



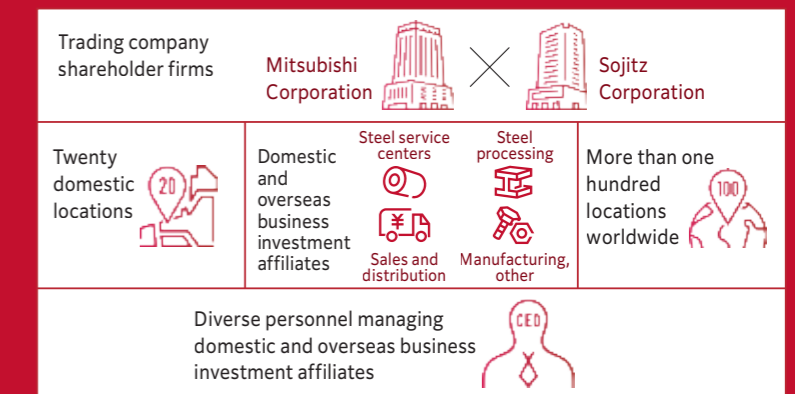
## 01

Metal One and Group affiliates' combined capabilities in optimizing steel distribution



## 02

Strong ties with Mitsubishi Corporation and Sojitz Corporation and a robust network of global locations and business investment affiliates



## 03

Collaborating closely with partners to create new businesses through digital transformation and carbon neutrality, leveraging our drive to constantly pursue innovation



Utilizing digital platforms to optimize supply chain flow from upstream to downstream



Promoting carbon neutrality with a two-pronged approach



Striving to create new value with partners worldwide

## Plate, Construction & Tubular Products

Business Division

### Also driving carbon neutrality through superior domestic sales capabilities

The Plate, Construction & Tubular Products Business Division consists of three business units that handle heavy industries, steel plate and pipe for infrastructure, construction materials and steel scrap. It boasts superior domestic sales capabilities.

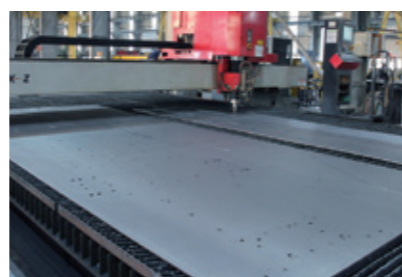
Putting its cumulative expertise to work, the division also works with shareholders Mitsubishi Corporation and Sojitz Corporation on offshore power generation and other areas of the renewable energy sector, contributing to a carbon neutral society, creating new businesses, and working on solutions related to social issues.

### Plate Products Business Unit

Responding to the trust of end-users in shipbuilding and construction and industrial machinery

The Plate Products Business Unit has built a powerful domestic sales organization that serves end-users and secondary wholesalers in such sectors as shipbuilding, construction and industrial machinery, bridges, and plants, offering services that inspire customer trust. The unit has also rolled out a broad range of processing and distribution capabilities that were developed domestically in overseas markets—Brazil, China, India and elsewhere—and is engaged in high-value-added businesses rooted in local markets.

**Product lines** Medium and heavy plate and more



### Construction Products Business Unit

Boasting unprecedented scale in the industry with the variety of construction materials handled

The Construction Products Business Unit handles a diverse range of construction materials and steel scrap that is their primary raw material. MM & Kenzai Corporation, which boasts the largest scale in Japan, leads the unit. Making use of the network it built, the unit is helping to create a low-carbon recycling society by engaging seamlessly in everything from collecting steel scrap to delivering that scrap to electric arc furnace operators and supplying construction materials for office buildings, condominiums and malls. The business unit also leases and sets up temporary construction equipment and materials indispensable to construction sites, playing an all-encompassing role in delivering social capital.

**Product lines** H beams, steel plate, columns, flat bars, light beams, deformed bars, steel pipe pile, sheet pile, steel and stainless steel scrap and more



### Tubular Products Business Unit

Also supplying steel pipe to help create a true hydrogen society

The Tubular Products Business Unit—with Metal One Sumisho Tubular Products Co., Ltd., Japan's top trading company specializing in steel pipe at its core—deploys its comprehensive capabilities and services in such areas as warehousing and processing to operate businesses that handle steel pipe and a full line of piping equipment and materials for infrastructure and automobiles. As the steel pipe supplier of a primary trading company with a powerful presence, this business unit is also helping to create the coming hydrogen society. The unit also oversees local manufacturing of steel pipe used in two- and four-wheeled vehicles in Indonesia, providing essential support for transport and lifestyles in that country as well as nearby nations.

**Product lines** Structural pipe, steel tubes for piping, square tubes, mechanical structural pipe for machine parts, tubular products and piping equipment and more



### PICK UP

Leading the industry through cooperation that pushes beyond trading company boundaries

Metal One established MM & Kenzai Corporation with Mitsui & Co., Ltd. in 2014, and Metal One Sumisho Tubular Products Co., Ltd. with Sumitomo Corporation in 2019 through mergers. The idea is to take the industry lead in restructuring beyond the boundaries of trading companies. Fully utilizing the networks, capabilities and human resources each trading company possesses, they are confronting the mountain of social issues Japanese society faces and looking for solutions to such things as an aging society with fewer children, weakening social infrastructure, and carbon neutrality.





## Flat Products

Business Division

### Comprehensive support for domestic steel sheet demand

The Flat Products Business Division handles a variety of steel sheet products—including hot- and cold-rolled steel sheet, surface-treated steel sheet, electrical steel sheet and tinplate—through its Flat Products, Automotive & Electrical Steel Domestic Business Unit. This unit provides comprehensive support, primarily through steel service center operations, which boast the largest scale in the industry. Besides keeping the supply chains of manufacturers in the automotive, electrical machinery and other sectors robust, we satisfy demand for steel sheet used for a variety of purposes.

### Flat Products, Automotive & Electrical Steel Domestic Business Unit

#### Building high-value-added supply chains with diverse adaptability

Steel sheet is used for a vast range of purposes, including making cars, electrical machinery, construction materials, steel furniture and containers. Our business models go beyond the

trading sphere. For example, we provide various kinds of added value through our Group's steel sheet service centers. These service centers are leaders in Japan in size and their capacity to process automotive steel sheet, providing a stable supply of high-quality steel sheet to car and parts manufacturers. They also handle

various kinds of processing, and keep supply chains humming with just-in-time deliveries. We also run purpose-built businesses related to electrical machinery, construction materials, steel furniture, and containers, handling end-users' detailed requirements.

Product lines | Hot- and cold-rolled steel sheet, surface-treated steel sheet, electrical steel sheet, tin-free steel, tinplate and more



### PICK UP

#### Isuzu—Japan's leading steel service center

Isuzu Corporation is a steel service center that processes steel sheet, delivers products, and offers a full range of services to satisfy the requirements of customers, primarily in the automotive industry. Isuzu also handles customers in other sectors that use steel sheet, such as construction materials, electrical machinery, and industrial machinery. Metal One is able to devise optimal sheet distribution supply chains because it possesses multiple steel service centers. Among these is Isuzu: Japan's leading coil center, boasting one million tonnes in annual sales volume. Operating nine locations from the Kanto to the Tokai and Kyushu, Isuzu also offers the best quality and operational efficiency in the industry, and provides expertise to overseas Metal One Group steel service centers—a wellspring of the Group's overall capabilities.



## Global

Business Division

### Supporting manufacturing supply chains worldwide

The Global Business Division, consisting of three business units, supports manufacturing supply chains worldwide, primarily through steel service center operations handling steel sheet processing for automotive and electrical appliance industries operating overseas.

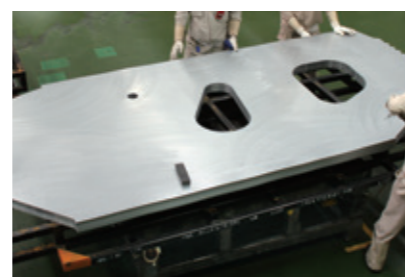
We are also focusing on initiatives related to electric vehicles (EVs)—which are rapidly gaining more acceptance in response to increasing moves toward carbon neutrality—and preparing to deal with the rapidly changing next-generation car business.

### Automotive & Electrical Steel Global Business Unit

Supporting local manufacturing overseas and contributing to local supply chains

The Automotive & Electrical Steel Global Business Unit runs steel service centers that handle local steel sheet processing for automotive and electrical appliance industries overseas in Central America, Asia, China and India. We are proud of our superior business scale among Japanese trading companies. Particularly with respect to automotive steel sheet, we help build local supply chains with support in the form of materials and parts for manufacturing. These are our strengths as a Japanese company that can meet demanding requirements such as high quality and just-in-time deliveries.

**Product lines** Hot- and cold-rolled steel sheet, surface-treated steel sheet and more



### Global Service Center Management Unit

Managing the top steel service center operations in North and Central America

The Global Service Center Management Unit primarily runs steel service centers in the Americas. That includes Coilplus, Inc., which has been around in business for four decades and operates steel service centers in the U.S., Canada and Mexico. With an annual business volume of around a million tonnes at nine plants, Coilplus boasts preeminence in terms of history and scale in North America. In Brazil, our Group affiliate Soluções em Aço Usiminas S.A. partners with Usiminas, South America's largest steel manufacturer, to handle a variety of local steel sheet processing requirements. In Italy, we also have a stake in Lagor S.r.l., which manufactures transformer cores essential to power transmission grids.

**Product lines** Hot- and cold-rolled steel sheet, surface-treated steel sheet and more



### xEV Solution & Electrical Steel Global Business Unit

Offering robust capabilities and services in growing EV markets, too

We provide high-value-added capabilities and services as a steel trading company, combining expertise and knowledge developed from handling electrical steel sheet for transformers and motors to satisfy expanding demand for electric power and markets for EVs (electric vehicles), which is expected to grow as manufacturers strive to achieve carbon neutrality. We have also been working on groundbreaking initiatives meant to make next-generation smart factory concepts a reality through Kyowa Co., Ltd., a Group affiliate that manufactures equipment for steel service centers.

**Product lines** Electrical steel sheet and more



### PICK UP

Italy's Lagor S.r.l. manufactures transformer cores indispensable to Europe's power transmission grid

Metal One took a stake in Lagor S.r.l., which manufactures transformer cores indispensable to Europe's power transmission grid, in July 2024. The company has manufactured and sold cores that are vital transformer components, primarily to transformer manufacturers in Europe, for over five decades. We are responding to the demand for transformer cores—which is expected to grow—by leveraging the company's superior quality and technical strengths in combination with the global network Metal One possesses. Our goal is to help create a carbon-free world and a more sustainable society.





## Global Marketing & Energy Project

Business Division

### Contributing to the world's infrastructure and also focusing on creating new business

The Global Marketing & Energy Project Business Division consists of the three business units at right. Leveraging the Metal One Group's global network, we export a variety of steel products and semi-finished products and also deal in offshore trading, meeting the requirements of customers in various countries and industries. We are also proactively pursuing the creation of new business models that help solve social and environmental issues by combining digital technologies and new capabilities.

#### Global Marketing Business Unit

Building high-value-added supply chains to our lifestyles and infrastructure worldwide

Trading—a trading company's core task—is the main activity of the Global Marketing Business Unit. Our unit also offers capabilities that include the collection of various kinds of data, opening new markets, and handling risk management and logistics. We also pursue business investments through approaches that integrate these capabilities and partnerships. We supply a wide range of steel products indispensable to people's lifestyles through our locations and partners around the world. This includes varieties of steel sheet used for a broad range of purposes, as well as the steel plate, construction materials, rails and other products essential to constructing infrastructure such as buildings and bridges.

**Product lines** Hot- and cold-rolled steel sheet, surface-treated sheet, steel plate, shapes, rails, semi-finished products and more



#### Energy Project Business Unit

Provides solutions for overseas resource development projects

The Energy Project Business Unit supplies complete sets of steel pipe and piping equipment and materials—including oil-country tubular goods (OCTGs), line pipe and specialty pipe—to overseas projects, mainly those collecting oil or natural gas. Leveraging our abundant experience and expertise in handling projects, we have the comprehensive capabilities to be a solutions provider in line with customer requirements. We also make strategic business investments. Keeping our eye on the shift to carbon neutrality, we are also focusing on areas such as renewable energy and carbon capture and storage.

**Product lines** Line pipe, OCTGs, specialty pipe, stainless steel pipe, piping equipment and materials and more



#### Business Development Business Unit

Developing new digital capabilities for the steel businesses of the future

We established our new Business Development Business Unit to consolidate the entire company's business development capabilities. We've assigned the North & Central America Business Development Office, DX Strategy Office, and the Business Creation & Innovation Office to this organization, which will be combining digital technology and new capabilities as well as creating a new business model that comes up with global solutions to social and environmental issues. Along with accelerating Metal One's growth through innovative efforts that increase the sustainability of the steel industry, we will be creating new value for society as a whole.



#### PICK UP

We have also received numerous orders for major infrastructure projects in Asia and Africa

Metal One has been an integral part of numerous infrastructure projects in developing countries in Asia and Africa, including exporting rail for railroads and steel plate used in bridges. In India, for example, we supplied several hundred thousand tonnes of freight rail for a Sojitz Corporation freight railroad project. We also strictly adhere to local requirements by jointly supplying various steel products with Japanese steel manufacturers through official development assistance (ODA) civil engineering and infrastructure projects in Africa and elsewhere.



## Wire, Specialty & Stainless Steel

Business Division

### A group of professionals boasting superior specialization and capabilities

The Wire, Specialty & Stainless Steel Business Division consists of two business units that supply a wide range of products from base materials such as wire rod, specialty steel and stainless steel to processed goods and parts made of those steel materials. These products are indispensable to the automotive, construction machinery, civil engineering, and construction industries, as well as many others. Our division operates businesses with deep roots in supply chains at every level.

Combining sales strengths that stand out within the industry and the capabilities of Group affiliates with long histories, we supply highly specialized products to a broad range of customers in Japan and elsewhere.

### Wire & Specialty Steel Business Unit

A group of wire and specialty steel professionals boasting the highest business volume in Japan

Along with our wholly-owned subsidiaries, Metal One Steel Products Corporation and Metal One Specialty Steel Corporation, the Wire & Specialty Steel Business Unit boasts a strong presence and the highest business volume in the domestic wire and specialty steel sectors. We also operate businesses overseas using the vast expertise we've developed to date.

In addition to trading in base materials within the wire sector, we have business investments in wire manufacturers both in Japan and overseas, so we also supply secondary and tertiary wire products indispensable to cars, appliances and construction. Metal One Steel Products Corporation, for example, handles a wide range of secondary and tertiary wire products, holding a key role from upstream to downstream in wire value chains. Metal One Specialty

**Product lines** Wire rods, secondary and tertiary wire products, specialty steel sheet, structural steel, alloy steel, spring steel, bearing steel, free-cutting steel, heat-resistant steel, tool steel and more



Steel Corporation sells all kinds of specialty steel materials, and has a history of over a century in the specialty steel sector. The company also possesses combined warehousing and processing capabilities.

We use the knowledge and expertise developed over our many years in the specialty steel industry—which demands high specialization—to meet the diverse requirements of customers in the automotive, construction equipment, and other industries.

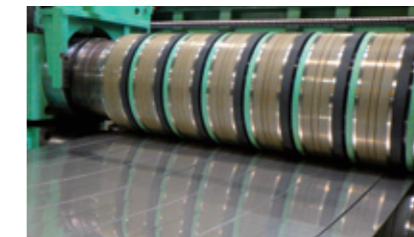
### Stainless Steel Business Unit

Developing both stainless steel sheet and plate globally

The Stainless Steel Business Unit operates globally, leveraging the Group's overall capabilities in everything from trading stainless steel materials used for a wide range of purposes in sectors such as cars, appliances, civil engineering and construction and kitchen equipment. We also pursue strategic business investments.

In the stainless steel sheet sector, for example, we handle processing for diverse industries, from cars, civil engineering and construction to precision devices, through Sus-Tech Corporation, Japan's largest stainless steel service center. Additionally, Seikoh Co., Ltd. meets detailed requirements from customers in the stainless steel plate sector with expertise in and facilities for welding, bending and mechanical processing.

**Product lines** Stainless steel sheet, pipe, shapes and bars, processed stainless steel products and more



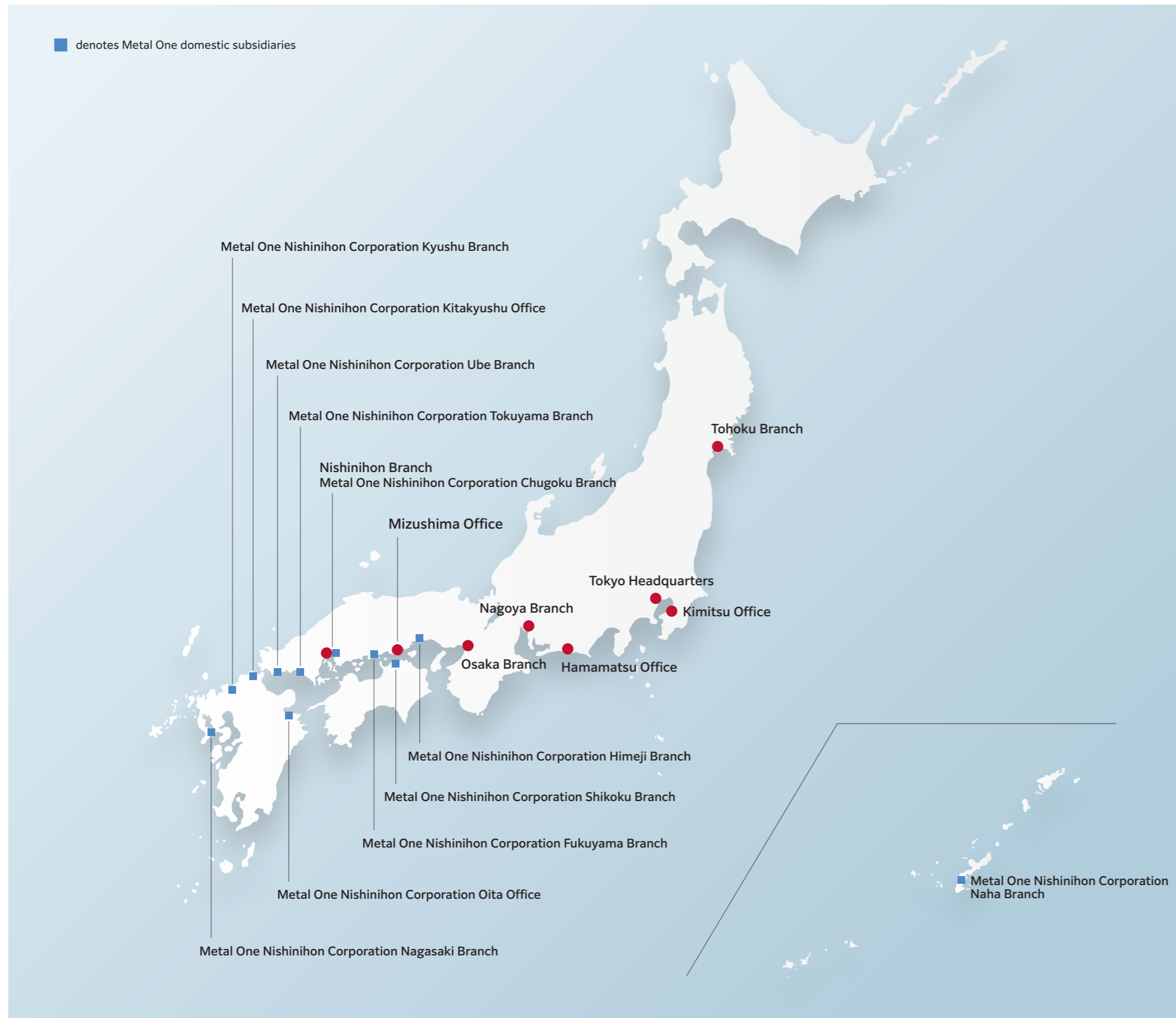
### PICK UP

#### One-stop fastener product services

Group affiliate Nifast Corporation provides one-stop services for fasteners—tertiary wire products that include such items as bolts and nuts—undertaking procurement according to car and motorcycle manufacturers' production plans. We also handle everything from warehousing and quality inspection to logistics. Its network extends to North America (the U.S., Canada and Mexico), Europe (Hungary), South America (Brazil), and India.



## Domestic Offices/Domestic Business Investment Affiliates



### Service Centers

Metal One Service Center Holdings Corporation	Oversight and management of service center operations under its umbrella
AOI Co., Ltd.	Cutting, processing and sales of steel plates/sheets
Isuzu Corporation	Cutting, processing and sales of steel plates/sheets
Sus-Tech Corporation	Cutting, processing and sales of stainless steel plates/sheets
Suzuyasu Corporation	Cutting, processing and sales of steel plates/sheets
Metal One Steel Service Corporation	Cutting, processing and sales of steel plates/sheets
Metal One Ryowa Corporation	Cutting, processing and sales of steel plates/sheets
MOBY Corporation	Cutting, processing and sales of steel plates/sheets

### Steel Processing

Ariake Steel Center Co., Ltd.	Distribution and processing center for steel shipbuilding products
Kyushu Steel Center Co., Ltd.	Painting, cutting, assembling and processing of steel shipbuilding products
Seikoh Co., Ltd.	Cutting, processing and sales of stainless steel plates/sheets
Tamatsukuri Corporation	Melt-cutting, processing and sales of heavy and medium steel plates
Topura Techno Co., Ltd.	Processing and sales of wire rod products
Maxis Corporation	Processing and sales of heavy machinery parts and specialty steel
Mizushima Metal Products Corporation	Processing and sales of steel products
Metal One Specialty Steel Corporation	Processing and sales of specialty steel

### Distribution and Sales

Asahi Kizai Co., Ltd.	Construction; sales and leasing of construction equipment
MM&KENZAI Corporation	Sales of steel products and processed construction materials
M. O. Tec Corporation	Leasing of construction and civil engineering materials and equipment
Canox Corporation	Distribution and sales of steel products and processed construction materials
Metal One Sumisho Tubular Products Co., Ltd.	Processing and sales of steel pipes and tubular products
Metal One Tubular Products Inc.	Export and domestic sales of steel pipes
Metal One Steel Products Corporation	Trading and domestic sales of steel products

### Manufacturing and Others

Kyowa Co., Ltd.	Manufacturing and sales of steel processing machinery, etc.
Sunrock Oyodo Co., Ltd.	Processing wire rods
Japan Pail Corporation	Manufacturing steel pails
NejiLaw MO IP Innovation Inc.	Development, licensing, manufacturing and sales of new technologies related to steel products and others
Metal One Office Corporation	Support of foreign trade-related and sales operations

## Overseas Offices / Business Investment Affiliates

### Europe, CIS and the Middle East

- England  
Metal One UK Ltd.
- Hungary  
Nifast Hungary Kft.
- Germany  
Metal One Deutschland GmbH
- Italy  
LAGOR S.r.l.
- United Arab Emirates  
Dubai Office
- Kenya  
Nairobi Branch

### South and West Asia

- India  
Metal One Corporation India Pvt. Ltd.  
Metal One Corporation India Pvt. Ltd. Chennai Branch  
Metal One Corporation India Pvt. Ltd. Mumbai Branch  
India Metal One Steel Plate Processing Private Ltd.  
Mahindra Steel Service Centre Ltd.  
Manesar Steel Processing (India) Private Ltd.  
Nifast India Private Ltd.



### North and Central America

- U.S.A.  
Metal One Holdings America, Inc.  
Coilplus, Inc.
  - Coilplus-Alabama
  - Coilplus-Illinois
  - Coilplus-North Carolina
  - Coilplus-Ohio
  - Coilplus-Pennsylvania
  - Coilplus-Texas
 Metal One America, Inc.  
Nifast Corporation
- Canada  
Cantak Corporation  
Coilplus Canada, Inc.  
Nifast Canada Corporation
- Mexico  
Metal One de México, S.A. de C.V.  
Metal One de México, S.A. de C.V. Aguascalientes Branch  
Metal One de México, S.A. de C.V. Monterrey Office  
Coilplus Mexicana, S.A. de C.V.  
Metal One Steel Service de México, S.A. de C.V.  
Nifast Mexicana, S.A. de C.V.
- Panama  
Steel Holdings of America, S. de R.L.

As of April 1, 2025

### East Asia

- China  
Metal One (China) Corporation  
Metal One (China) Corporation Wuhan Office  
Metal One (Guangzhou) Commerce Co., Ltd.  
Metal One (Tianjin) Commerce Co., Ltd.  
Metal One Service Asia (Foshan, China) Co., Ltd.  
Metal One Service Asia (Guangzhou, China) Co., Ltd.  
Metal One Service Asia (Shanghai, China) Co., Ltd.  
Metal One Service Asia (Tianjin, China) Co., Ltd.  
Metal One Service Asia (Wuhan, China) Co., Ltd.  
Nanjing Baori Wire Products Mfg. Co., Ltd.  
Shanghai Neturen Co., Ltd.  
Shanghai Wubo Steel Structure Material Co., Ltd.

- Hong Kong  
Metal One Hong Kong Ltd.

- Taiwan  
Metal One Corporation (Taiwan) Ltd.  
Metal One Corporation (Taiwan) Ltd. Kaohsiung Branch

### ASEAN and Oceania

- Thailand  
Metal One (Thailand) Co., Ltd.  
DIA Modern Engineering (Thailand) Co., Ltd.  
MC Metal Service Asia (Thailand) Co., Ltd.  
Pacific Sheet and Coil (Thailand) Co., Ltd.  
Siam Hi-Tech Steel Center Co., Ltd.

- Malaysia  
Kuala Lumpur Office  
Nicom Steel Centre (M) Sdn. Bhd.

- Philippines  
Manila Branch  
MM Steel Service Center Corporation

- Indonesia  
PT. Metal One Indonesia  
PT. Indonesia Steel Tube Works  
PT. Iron Wire Works Indonesia  
PT. Metal One Steel Service Indonesia  
PT. Steel Center Indonesia

- Vietnam  
Metal One (Vietnam) Co., Ltd.  
Metal One (Vietnam) Co., Ltd. Ha Noi Branch  
Nam Phat MO Metal Service (Vietnam) Co., Ltd.

### South America

- Brazil  
Metal One do Brasil Indústria, Comércio e Representação Comercial Ltda.  
Metal One Steel Plate Processing do Brasil Ltda.  
Nifast do Brasil Distribuição, Comércio e Importação Ltda.  
Soluções em Aço Usiminas S.A.

# Sustainability

## Environment

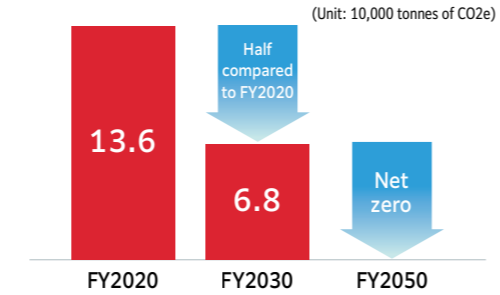
Metal One operates businesses around the world and we are aware that the Earth is our biggest stakeholder. Companies and society cannot hope for sustainable growth without considering global environmental issues. We at Metal One believe that caring for the environment as we conduct our corporate activities is a vital element in remaining responsible to society as a company. Based on that belief, we drafted our Environmental Charter, which provides guidelines for the efforts in which employees should engage. We seek to preserve the environment during our daily work duties based on our basic environmental management policy.

### Carbon neutrality initiatives

Recognizing that climate change issues are urgent challenges that confront all kinds of industries and companies—as well as people and their lifestyles—Metal One has set the goals of halving the Scope 1 and Scope 2 greenhouse gases the Group emits by FY2030 (compared to FY2020) and achieving net zero by FY2050.

To achieve our carbon neutrality initiative, we have built an organization that will manage and promote integrated efforts to deal with the greenhouse gases the Metal One Group emits, and with climate change overall. Adopting internal carbon pricing as a way to promote these efforts, we are evaluating the impact on operations as well as seeking investments targeted at cutting emissions by quantifying CO<sub>2</sub> emissions costs based on carbon neutrality scenarios. Additionally, we have endorsed the recommendations of the Task Force on Climate-Related Financial Disclosures, an international framework for climate risk disclosures, and strive to disclose timely information on our efforts.

Metal One Group's greenhouse gas emissions reduction targets



### Environment-related volunteer activities

We joined a program to create forests that give off minimal pollen promoted by the Tokyo Development Foundation for Agriculture, Forestry and Fisheries from fiscal 2024. We began our afforestation efforts in a grove located in Hinode-machi, Nishitama-gun, Tokyo, which we have named Company Forest: Metal One's Forest of Growth in Hinode.

## Health and Productivity Management

The Metal One Group considers the personal strengths of all our employees to be the collective source of the company's competitiveness. Health management is a key theme when it comes to maximizing employees' capabilities in each workplace. As such, we are pursuing various health and productivity management initiatives as we strive to create workplaces where all employees can work enthusiastically and in good mental and physical health.

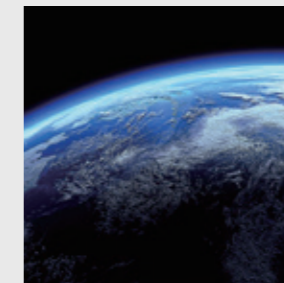
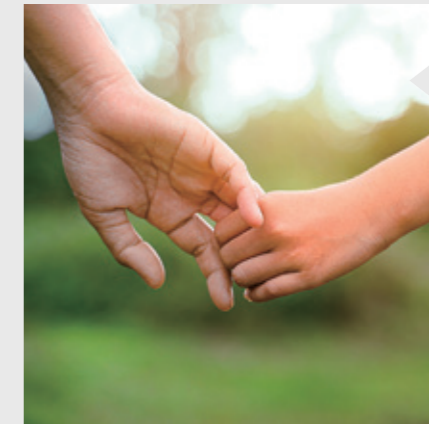
### Recognized for excellent corporate health and productivity management

Metal One has been recognized in the large enterprise category for these areas eight consecutive years since 2018, running under a corporate health and productivity management program operated jointly by the Ministry of

Economy, Trade and Industry and NPO Nippon Kenko Kaigi that acknowledges outstanding corporate health and productivity management.

This program publicly celebrates enterprises that put into practice particularly outstanding health and productivity management, based on their efforts on health issues and the health promotion initiatives Nippon Kenko Kaigi carries out.

Metal One will continue to implement various measures that improve employee health literacy, with our Wellness, Benefit & Compensation Unit ensuring that we maintain our commitment to promote health and productivity management.



## Safety and Health

Metal One deploys the full capabilities of the Metal One Group to improve customer satisfaction levels in Japan and other countries, abiding by our corporate credo and goal of becoming the world's top steel trading company.

We know it is vital to ensure safe, healthy, comfortable workplace environments for all our executives and employees—our company's most essential assets—including those at our Group companies. Everyone must feel secure and valued if we are to continue our corporate efforts.

The Metal One Group is united in pursuing specific measures to eliminate work-related accidents within the Group. We seek to ensure that the safety and health activities Group companies pursue are as effective as possible.

We are paying special attention to compliance and the global environment as we strive to become an enduring, unrivaled corporate group that contributes to society and has the trust of the public. At the same time, we seek to create the safest, most comfortable workplace environments and eliminate work-related accidents and injuries by reducing workplace risks. We also promptly share information about work-related accidents, and conduct safety and health training in accordance with the Group's safety and health philosophy and the guidelines offered below.



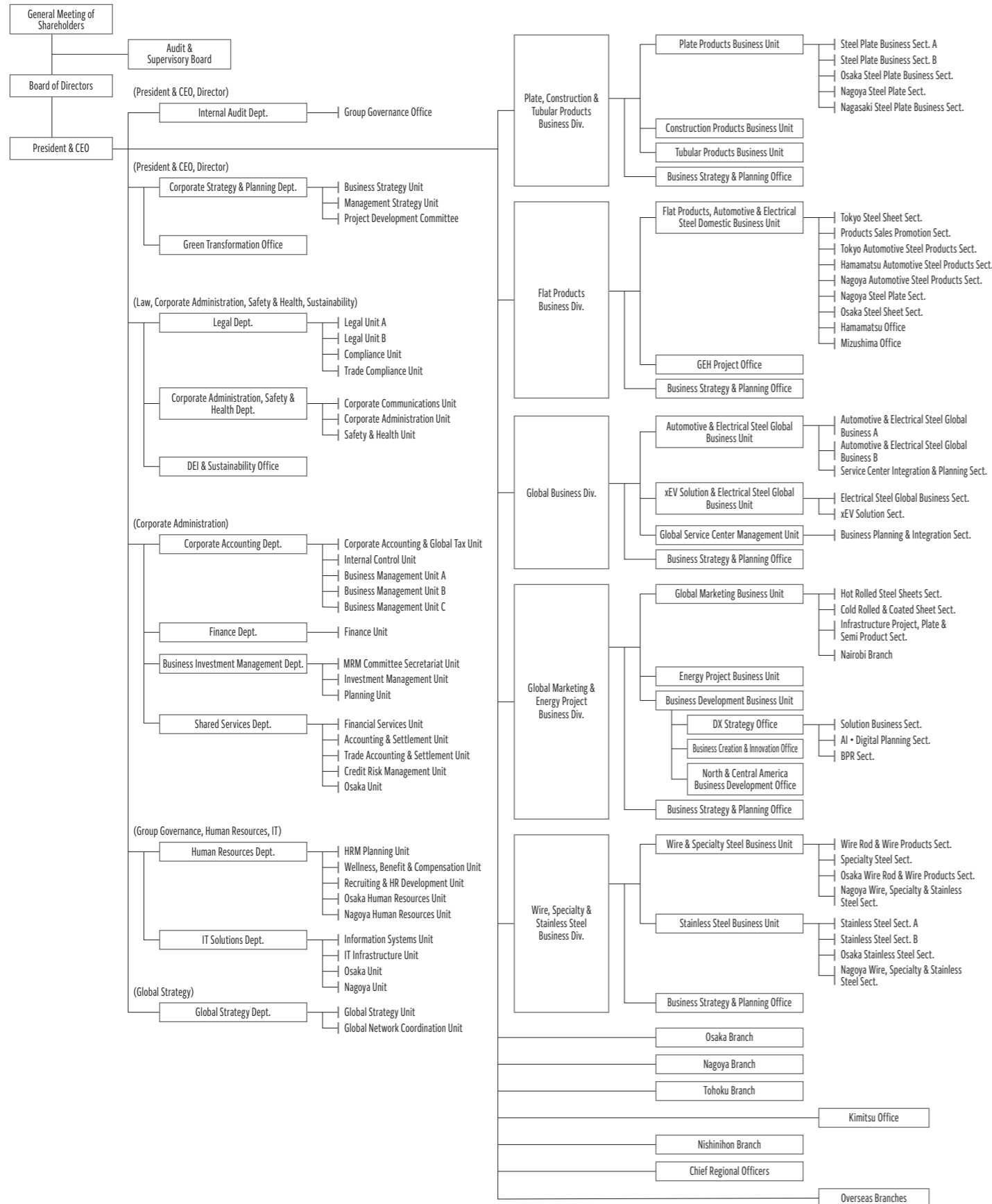
## Compliance

The most fundamental thing for a company seeking to fulfill its responsibilities to society is to engage in ethical business activities, including complying with laws and regulations, social norms and internal company rules. Metal One has created codes of conduct for officers and employees, and with the compliance committee—headed by our chief compliance officer—we are putting compliance into practice not just at Metal One Corporation but throughout our Group as well. We have devised various measures to prevent infractions as well as guard against recurrences of infractions. In the belief that compliance protects both the company and individual employees, we foster a comprehensive awareness of compliance among employees and throughout our Group. Should a compliance incident occur, we ask employees and Group affiliates to report it immediately so that we can handle things in a timely, appropriate manner as a corporate entity. We have also put a system in place that enables consultations with employees, including establishing a third-party whistleblowing contact point at an outside law firm along with our internal whistleblowing contact.



# Company Profile

## Organization Chart



## Company Profile

**Headquarters:** 7-2, Marunouchi 2-chome, Chiyoda-ku, Tokyo 100-7032, Japan  
Tel: +81-3-6777-2000

**Established:** January 6, 2003

**Capitalization:** ¥100 billion

**Shareholders:** Mitsubishi Corporation and Sojitz Corporation

**Scale of business:** Consolidated assets: Approx. ¥1,059.2 billion (for the term ended March 2024)  
Consolidated revenue: Approx. ¥2,354.4 billion (for the term ended March 2024)

**No. of employees:** Consolidated: Approx. 10,000 (As of April 2025)  
Non-consolidated: 968 (As of April 2025)

### Directors, Corporate Auditors and Executive Officers

Yoshiyuki Watanabe	President & CEO, Director	
Masaaki Bito	Senior Executive Vice President, Director	CCO, Corporate Supervising Officer (Law, Corporate Administration, Safety & Health, DEI & Sustainability)
Ko Imamura	Director	Executive Vice President; Group CEO, Materials Solution Group; Mitsubishi Corporation
Takashi Imura	Director	Division COO, Steel Products Div.; Mitsubishi Corporation
Ryutaro Hirai	Director	Corporate Advisor; Sojitz Corporation
Seisuke Sumimoto	Audit & Supervisory Board Member	
Shunji Aritake	Audit & Supervisory Board Member	General Manager for Materials Solution Administration Dept., Mitsubishi Corporation
Yoshiki Manabe	Audit & Supervisory Board Member	Director, Audit and Supervisory Committee Member; Sojitz Corporation
Mizue Nakazawa	Audit & Supervisory Board Member	Executive Officer; COO, General Accounting Dept., Business Accounting Dept.; Sojitz Corporation
Yoshihisa Miyamoto	Senior Executive Vice President	Senior Assistant to the President
Nobuo Mio	Managing Executive Officer	CFO, Corporate Supervising Officer (Corporate Administration)
Takeo Nukui	Executive Officer	Representative Director, President & CEO, MM & KENZAI Corporation
Masashi Mizuno	Executive Officer	COO, Plate, Construction & Tubular Products Business Div.
Keita Takai	Executive Officer	CIO, Corporate Supervising Officer (Group Governance, Human Resources, IT)
Makoto Morita	Executive Officer	COO, Global Marketing & Energy Project Business Div.
Hitoshi Hattori	Executive Officer	Corporate Supervising Officer (Global Strategy), General Manager, Global Strategy Dept.
Akito Nakamura	Executive Officer	COO, Global Business Div.
Hirotohi Kitagaki	Executive Officer	COO, Wire, Specialty & Stainless Steel Business Div.
Takumi Sakuma	Executive Officer	COO, Flat Products Business Div.
Nobuyuki Ogaya	Executive Officer	Chief Regional Officer (North & Central America); President, Metal One Holdings America, Inc.

As of April 1, 2025

# Metal One

Metal One Corporation